

sonnen

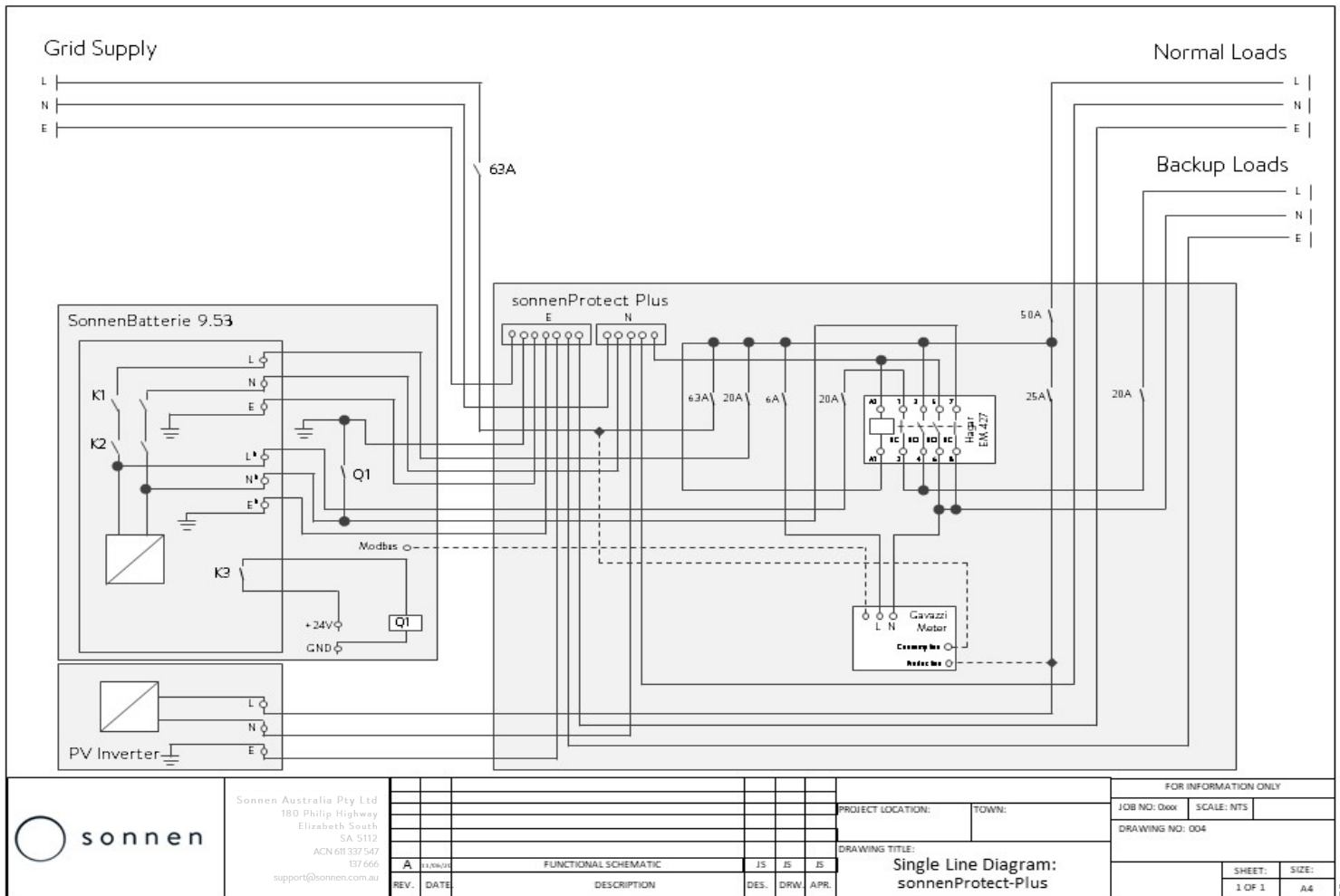


## sonnenProtect-Plus

The installation requirements for the sonnenProtect-Plus are explained in detail along with a video illustrating the entire process which can be found at the following address or by following our QR code:

<http://www.sonnensupportaustralia.com.au/protect-plus-installation-manual.html>

The following schematic explains the overall design characteristic and configuration requirements:



We reserve the right to update or modify any information. All values, information, images and illustrations in this data sheet, brochures and all other publications are exemplary and are subject to on-going changes and updates. Unless expressly designated as binding all this information is provided with no assurances. Only the specifications in the binding order acceptance or the purchase contract are valid.  
 \* The switch to emergency operation takes place automatically through the storage system.



## Datasheet sonnenProtect-Plus

The sonnenProtect-Plus and sonnenBatterie Hybrid 9.53 delivers power when the grid fails. With the Black-Start function, if the system switches off over night after a grid failure and depleted charge, owners are safe. As soon as the sun rises in the morning, energizing the Solar PV directly feeding into the sonnenBatterie, the system will automatically wake itself up, recharge the batteries and re-power the back-up load circuits. All of this without the grid being present and without the need for the customer to turn anything back on.

The sonnenProtect-Plus makes installation simple. All that's required as part of the sonnen Hybrid 9.53 installation is to connect to the device the Grid, Essential and Non-Essential Loads, any AC Coupled PV and then simply plug the pre-wired connections into the sonnenBatterie directly, including the Modbus connection too as the device has the metering pre-wired as well.

Maximum power (30 sec.)	3,000 W
Nominal power	2,500 W
Output voltage	230 VAC / ±10%
Nominal frequency	50 Hz
Network configuration in emergency operation	TNC
Switchover time	2 seconds
Weight	10.8 kg
Ambient temperatures	-5 °C – +45 °C
Dust and water protection	IP66
Dimensions (W / H / D)	500 / 350 / 200 cm
Overvoltage category	III
Grid supply connections rating	Miniature circuit breaker   Type C   63 A
Essential (backup) loads connections rating	Miniature circuit breaker   Type B   20 A
Non-essential (normal) loads connections rating	Miniature circuit breaker   Type C   50 A
AC Coupled solar PV connections rating	Miniature circuit breaker   Type C   25 A
sonnenBatterie connection rating	Miniature circuit breaker   Type B   20 A
sonnenBatterie metering connection rating	Miniature circuit breaker   Type B   6 A
Operating concept	Single-phase power supply via emergency circuit(s)*
Protective functions	Overcurrent protection, fault current protection
Recommended max AC connection route length to Grid Supply (line of sight)	295 cm

We reserve the right to update or modify any information. All values, information, images and illustrations in this data sheet, brochures and all other publications are exemplary and are subject to on-going changes and updates. Unless expressly designated as binding all this information is provided with no assurances. Only the specifications in the binding order acceptance or the purchase contract are valid.

\* The switch to emergency operation takes place automatically through the storage system.