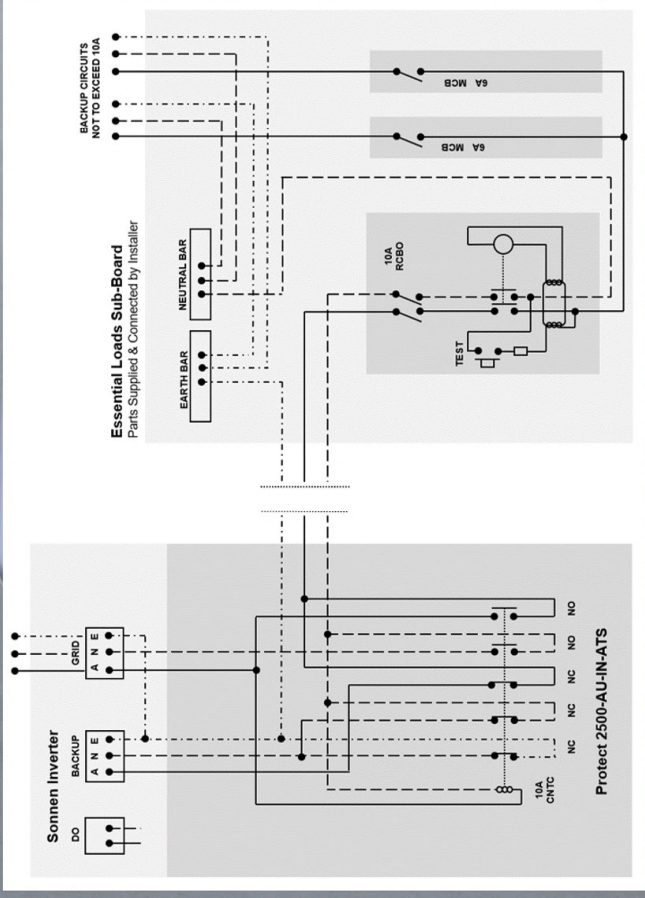


sonnen



## Datasheet sonnenProtect 2500-AU-IN-ATS

With the sonnenProtect 2500-AU-IN-ATS you are safe and will have power even if the grid fails. This accessory makes sure that the sonnenBatterie eco 8.2 can continue to provide any hard wired power circuit or appliance so that the consumption can proceed as usual once the installer / electrician has connected the accessory kit to an essential loads sub-board and required circuits. Alternatively if the sonnenBatterie is offline for service works or an unplanned reason then the sonnenProtect 2500-AU-IN-ATS will automatically have power routed to it via the normal grid supply.

Maximum power is W (10 sec.)	2,500
Nominal power in W	2,500
Output voltage	230 Vac / + / -10% / 50Hz
Switchover time	0.2 seconds
Weight in kg	1.8
Ambient temperatures	+5 to + 45 deg C
Dust and water protection	IP 21
Accessory Location	Hardware kit to be built into the eco 8.2, Sub-board supplied by installer
Protective functions	Overload / overcurrent over temperature / earth leakage

We reserve the right to update or modify any information. All values, information, images and illustrations in this data sheet, brochures and all other publications are exemplary and are subject to on-going changes and updates. Unless expressly designated as binding all this information is provided with no assurances. Only the specifications in the binding order acceptance or the purchase contract are valid.  
 \*If the device is turned off, there is no voltage on the sonnenProtect 2500 (AU). The ownership of a sonnenBatterie eco 8.2 with 6kWh or more of battery modules is the precondition to install the sonnenProtect 2500 (AU).  
 Item number on request.